



Stockholm University

Ship-based lidar evaluation of Southern Ocean clouds in the storm-resolving general circulation model ICON and the ERA5 and MERRA-2 reanalyses

Peter Kuma^{1,2,*}, Frida A.-M. Bender^{1,2}, Adrian J. McDonald³, Simon P. Alexander^{4,5}, Greg M. McFarquhar^{6,7}, John J. Cassano^{8,9,10}, Graeme E. Plank³, Sean Hartery¹¹, Simon Parsons¹², Sally Garrett¹³, Alex J. Schuddeboom³



Manuscript in preparation
https://doi.org/10.5281/zenodo.14071808

¹Department of Meteorology (MISU), Stockholm University, Stockholm, Sweden; ²Bolin Centre for Climate Research, Stockholm University, Stockholm, Sweden; ³School of Physical and Chemical Sciences, University of Canterbury, Christchurch, Aotearoa/New Zealand; ⁴Australian Antarctic Division, Kingston, Tasmania, Australia; ⁵Australian Antarctic Program Partnership, Institute for Marine and Antarctic Studies, University of Tasmania, Hobart, Tasmania, Australia; ⁶Cooperative Institute of Severe and High Impact Weather Research and Operations, University of Oklahoma, Norman, OK, USA; ⁷School of Meteorology, University of Oklahoma, Norman, OK, USA; ⁸Cooperative Institute for Research in Environmental Sciences, University of Colorado, Boulder, CO, USA; ⁹National Snow and Ice Data Center, University of Colorado, Boulder, CO, USA; ¹⁰Department of Atmospheric and Oceanic Sciences, University of Colorado, Boulder, CO, USA; ¹¹Department of Physics & Atmospheric Science, Dalhousie University, Halifax, Canada; ¹²New South Wales Department of Planning and Environment, Sydney, New South Wales, Australia; ¹³New Zealand Defence Force, Wellington, New Zealand; *E-mail: peter.kuma@misu.su.se; Web: peterkuma.net.

Summary

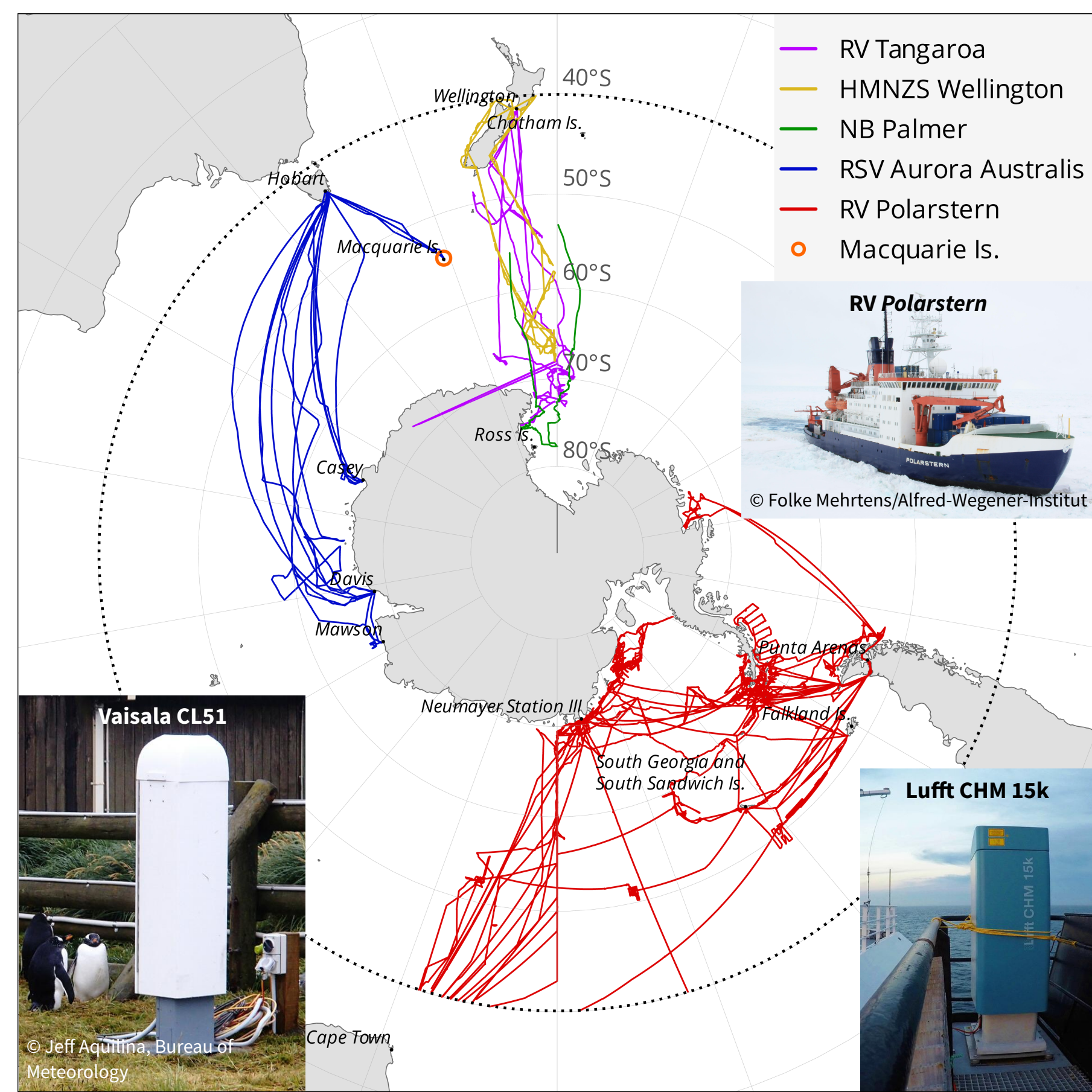
- Global storm-resolving models (GSRMs) are the next avenue of climate modelling.
- Due to the high resolution, parameterizations of convection and clouds are avoided.
- Standard-resolution models have substantial cloud biases over the Southern Ocean (SO), affecting radiation and sea surface temperature.
- We evaluated SO clouds in a GSRM version of ICON and the ERA5 and MERRA-2 reanalyses.

- The SO is dominated by low clouds, which cannot be observed accurately from space due to overlapping clouds, attenuation, and ground clutter.
- We analysed about 2400 days of lidar observations from 31 voyages and a station using a ground-based lidar simulator.
- ICON and the reanalyses underestimate the total cloud fraction by about 10 and 20%, respectively. ICON and ERA5 overestimate the cloud occurrence peak at about 500 m, potentially explained by their lifting condensation levels being too high.
- The reanalyses strongly underestimate near-surface clouds or fog.

- MERRA-2 tends to underestimate cloud occurrence at all heights.
- In daily cloud cover, ICON and the reanalyses tend to be about 1 and 2 oktas clearer, respectively.
- Compared to radiosondes, potential temperature is accurate in all, but ICON is too unstable over the low-latitude SO and too humid in the boundary layer.
- SO cloud biases are a substantial issue in the GSRM but are an improvement over the lower-resolution reanalyses.
- Explicitly resolved convection and cloud processes were not enough to address the model cloud biases.

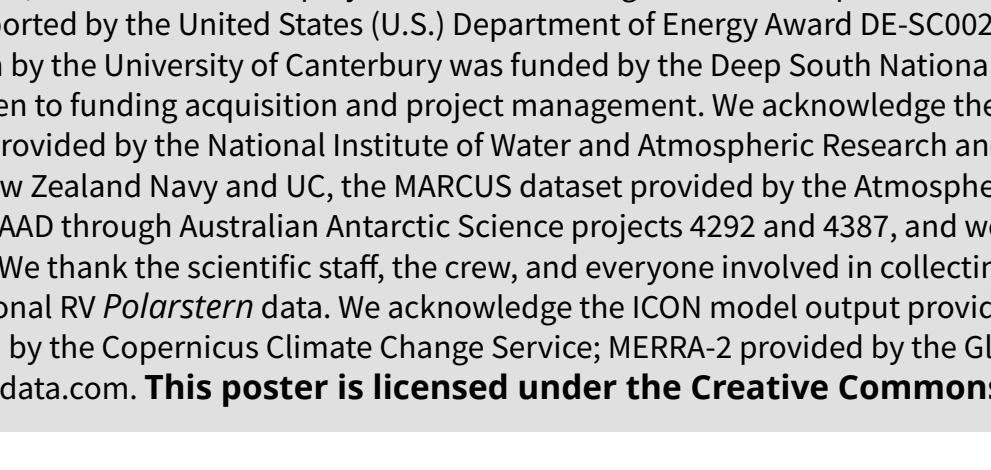
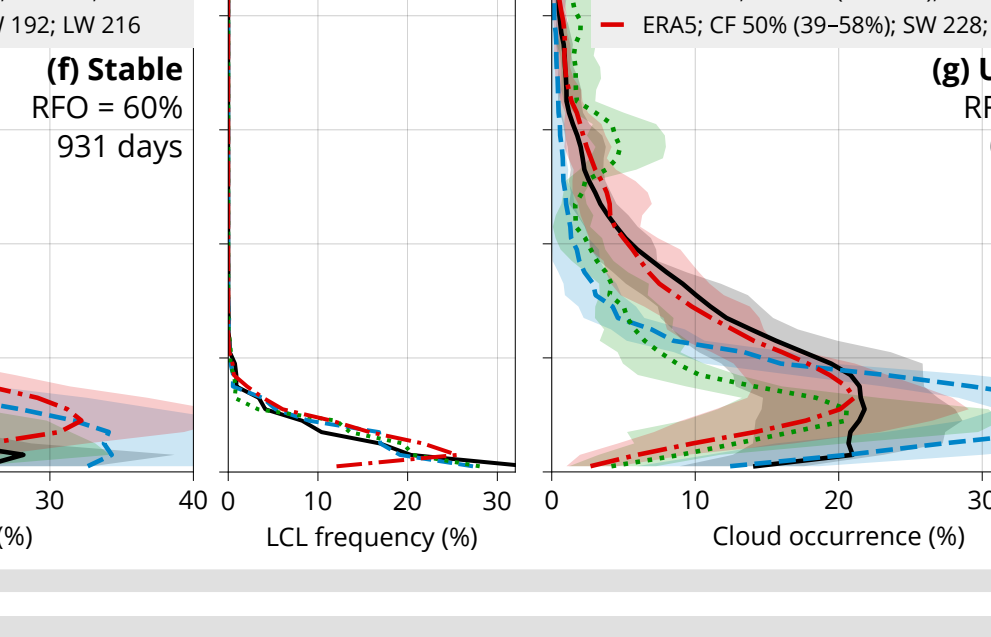
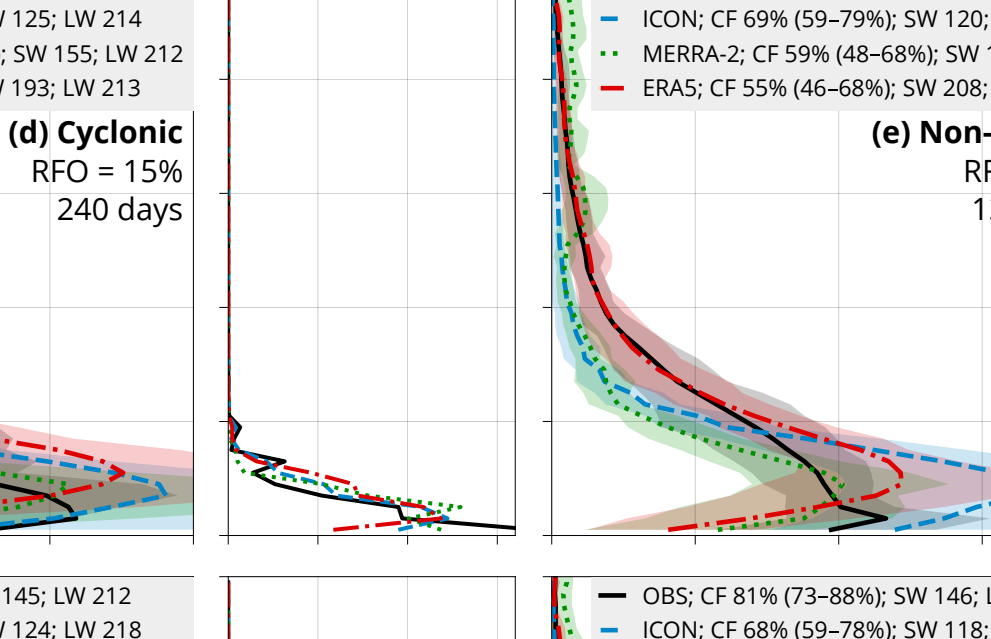
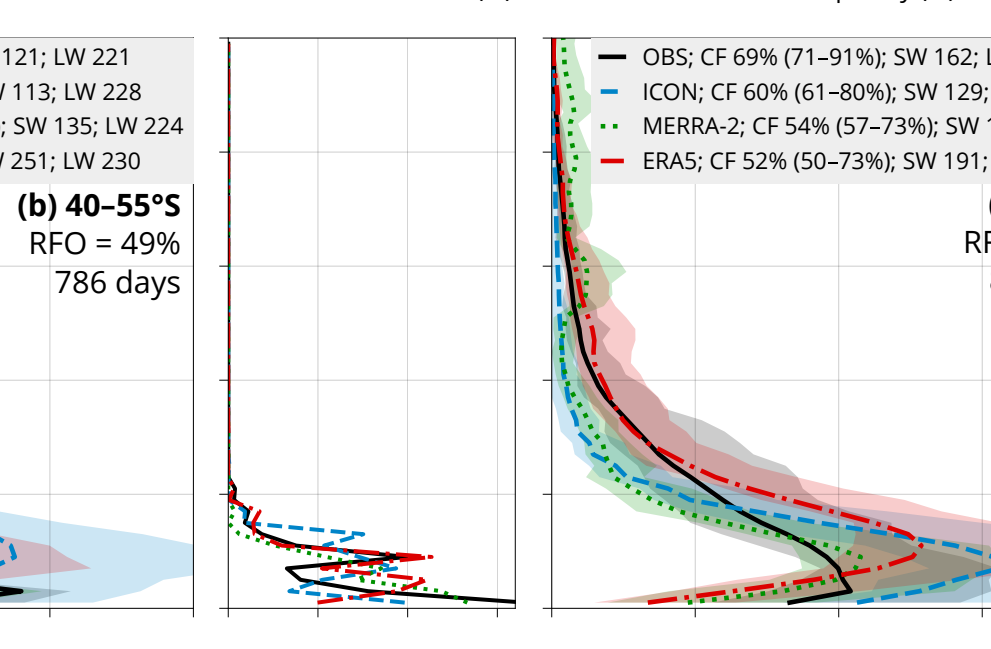
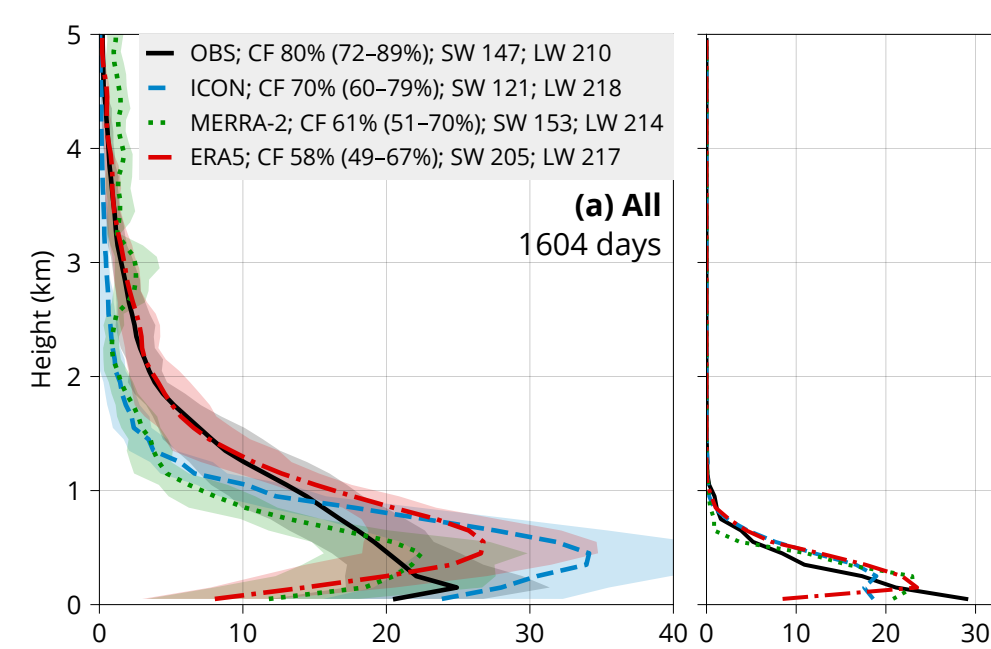
Voyages and stations

- We analysed 31 voyages of RV *Polarstern*, RSV *Aurora Australis*, RV *Tangaroa*, RV *Nathaniel B. Palmer*, HMNZS *Wellington*, and a station in the Southern Ocean south of 40°S between 2010 and 2021.
- A total of about 2400 days of observations were included.
- Ceilometer Vaisala CL51 and CT25K operating at 910 nm and Lufft CHM 15k operating at 1064 nm were used on the voyages.
- Radiosondes were launched and surface meteorological quantities measured continuously on multiple voyages.
- We subsetted the data by latitude into high- (55°S) and low-latitude SO (40–55°S), cyclonic activity based on cyclone tracking, and stability using lower tropospheric stability.



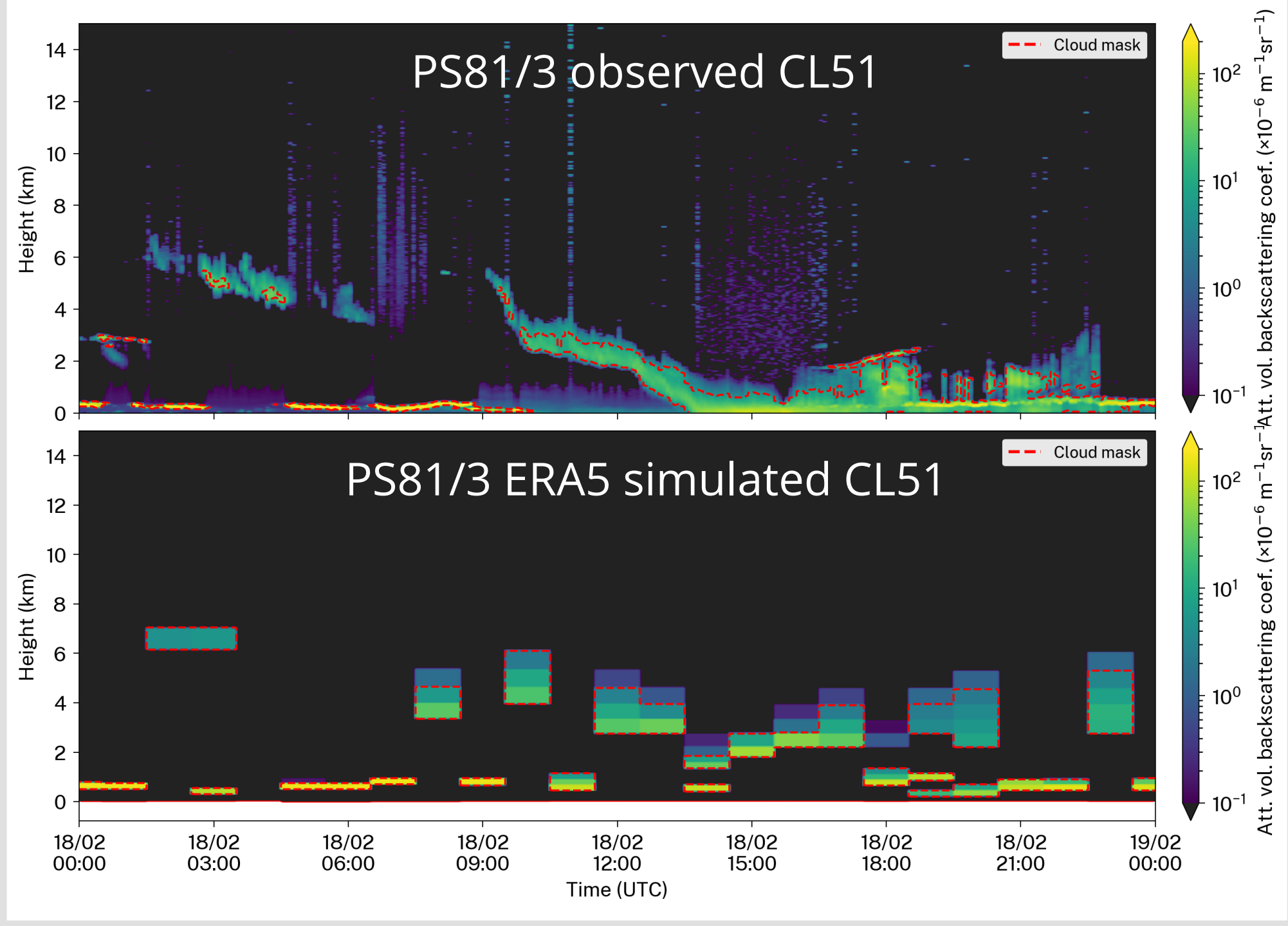
Cloud occurrence by height

- We aggregated data from all voyages and stations, each weighted equally.
- The total cloud fraction is underestimated in ICON and the reanalyses by about 10% and 20%, respectively.
- ICON overestimates cloud occurrence below 1 km and underestimates it above.
- MERRA-2 underestimates cloud occurrence at all heights.
- ERA5 simulates cloud occurrence relatively well above 1 km but strongly underestimates it near the surface.
- Fog or near-surface clouds are strongly lacking in the reanalyses.
- The models have a higher-altitude peak (at about 500 m) than observations.
- The reanalyses exhibit the too few, too bright bias previously identified in climate models.
- Outgoing top of atmosphere (TOA) shortwave (SW) radiation in the reanalyses is similar to or higher than in the satellite observations, while total cloud fraction is underestimated.
- ICON underestimates both cloud fraction and outgoing TOA SW radiation.
- Unstable situations are especially problematic for ICON, with a strongly overestimated peak at 500 m.



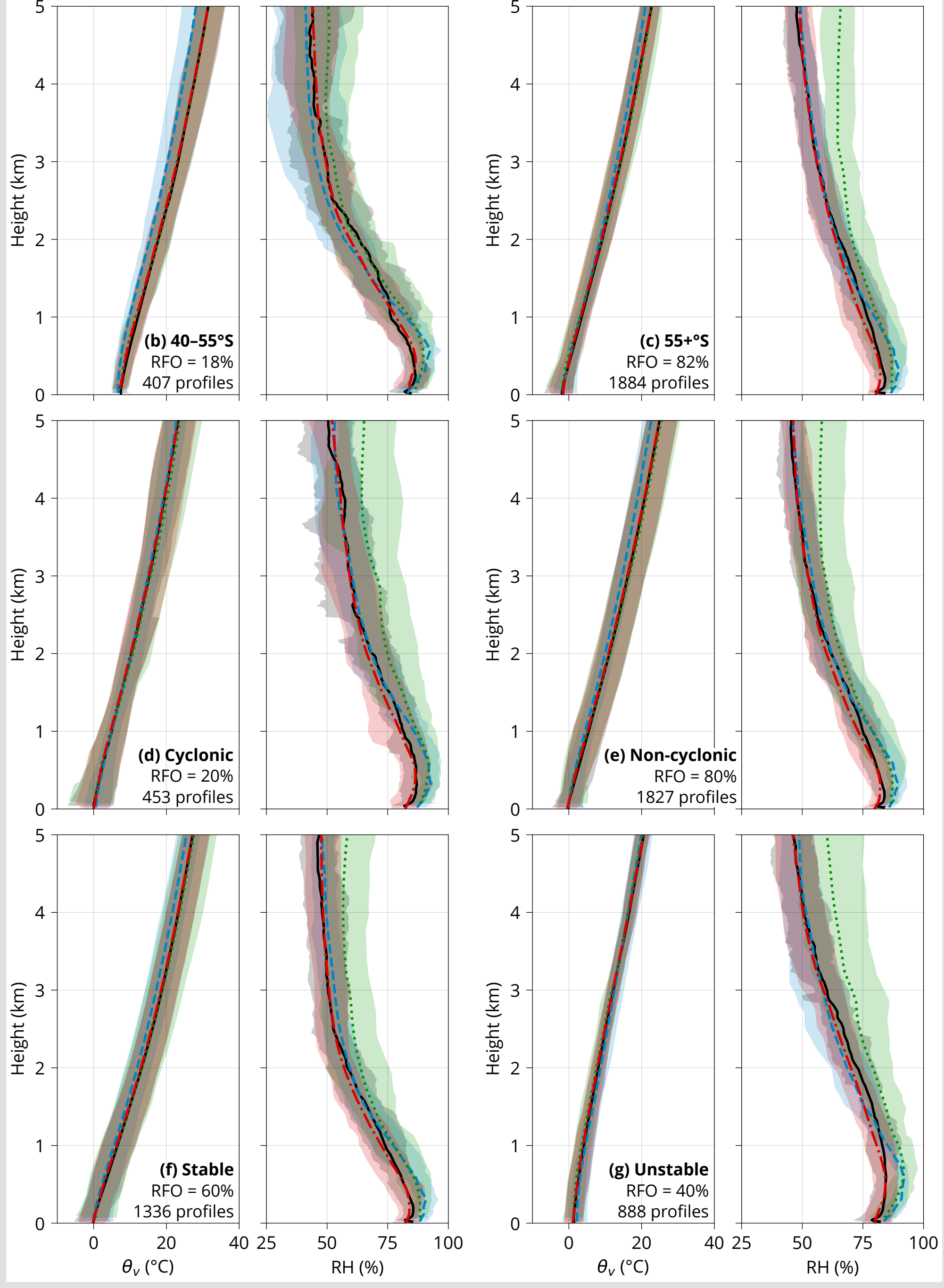
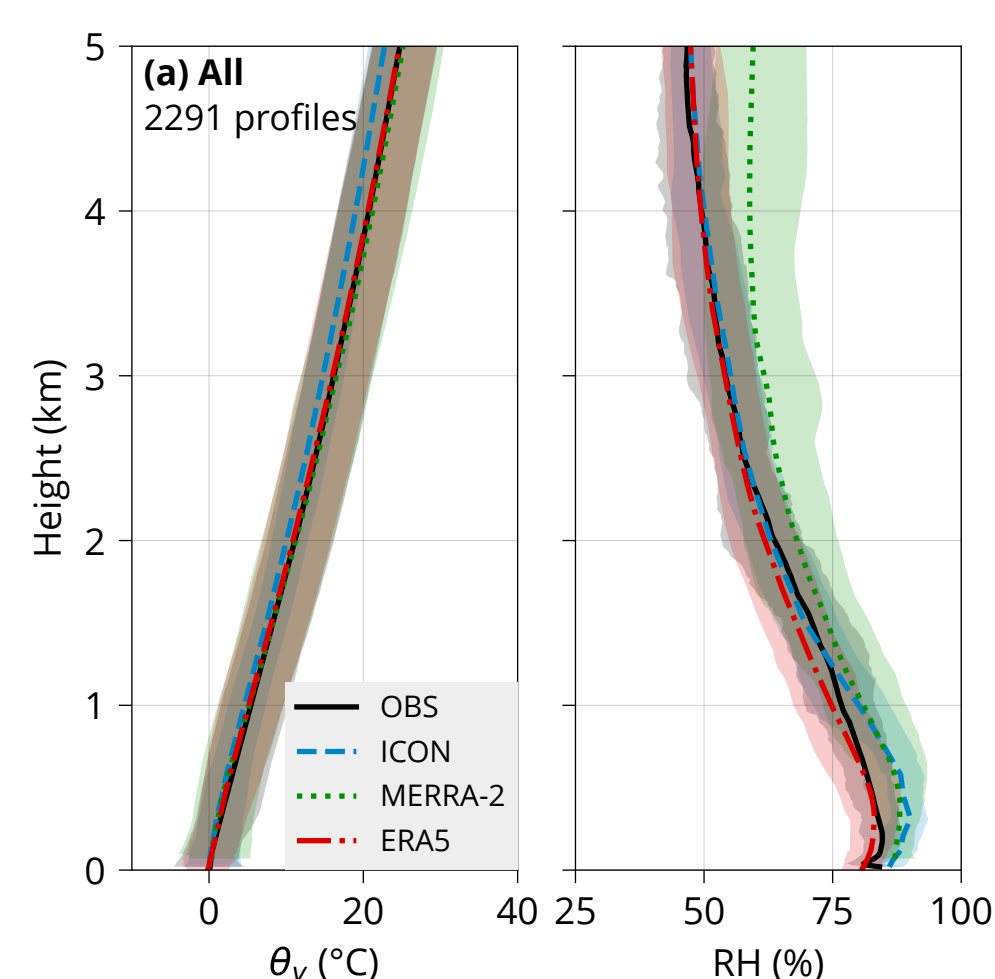
Lidar simulator

- An instrument simulator is needed for an unbiased comparison with a model.
- We used the Automatic Lidar and Ceilometer Framework (ALCF).
- ALCF is based on the instrument simulator COSP.
- It calculates simulated lidar backscatter from the model fields of cloud liquid and mixing ratio, cloud fraction, temperature, and pressure.
- Cloud mask is determined based on a threshold.
- Cloud occurrence by height is determined from the cloud mask.



Thermodynamic profiles

- We analysed about 2300 radiosonde profiles south of 40°S from the 24 RV *Polarstern* voyages, MARCUS, NBP1704, TAN1702, and TAN1802 campaigns.
- Spatially and temporally colocated profiles were taken from ICON and the reanalyses.
- Virtual potential temperature well-represented, except for ICON at 40–55°S, which is too cold at 5 km height. Consequently, it is too unstable.
- Variance of virtual potential temperature is too small in ICON.
- ICON is too humid in the first 1 km.
- MERRA-2 is too humid by up to 20%.



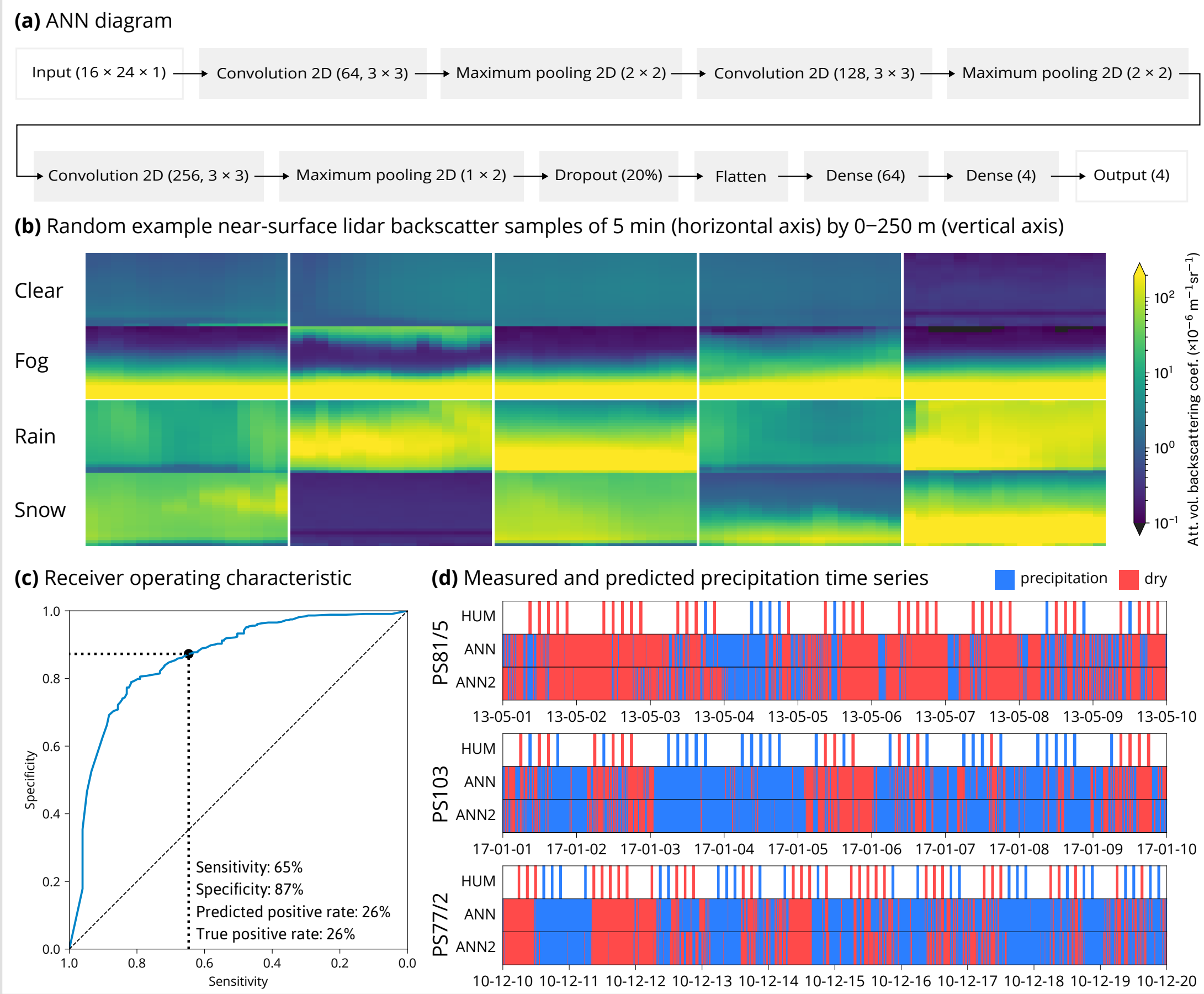
ICON

- We used Cycle 3 storm-resolving version of the Icosahedral Nonhydrostatic Weather and Climate Model (ICON) in development by the NextGEMS project.
- The horizontal resolution is about 5 km.
- 4 years of coupled simulations in 2021–2024.
- Unlike current GCMs, it does not parametrise mass flux but resolves convection explicitly.
- Turbulence is parametrised.
- Grid box cloud fraction is always either 0 or 100%.
- The model is free-running. Therefore, when comparing to observations, we take the same geographical location and time relative to the start of the year.



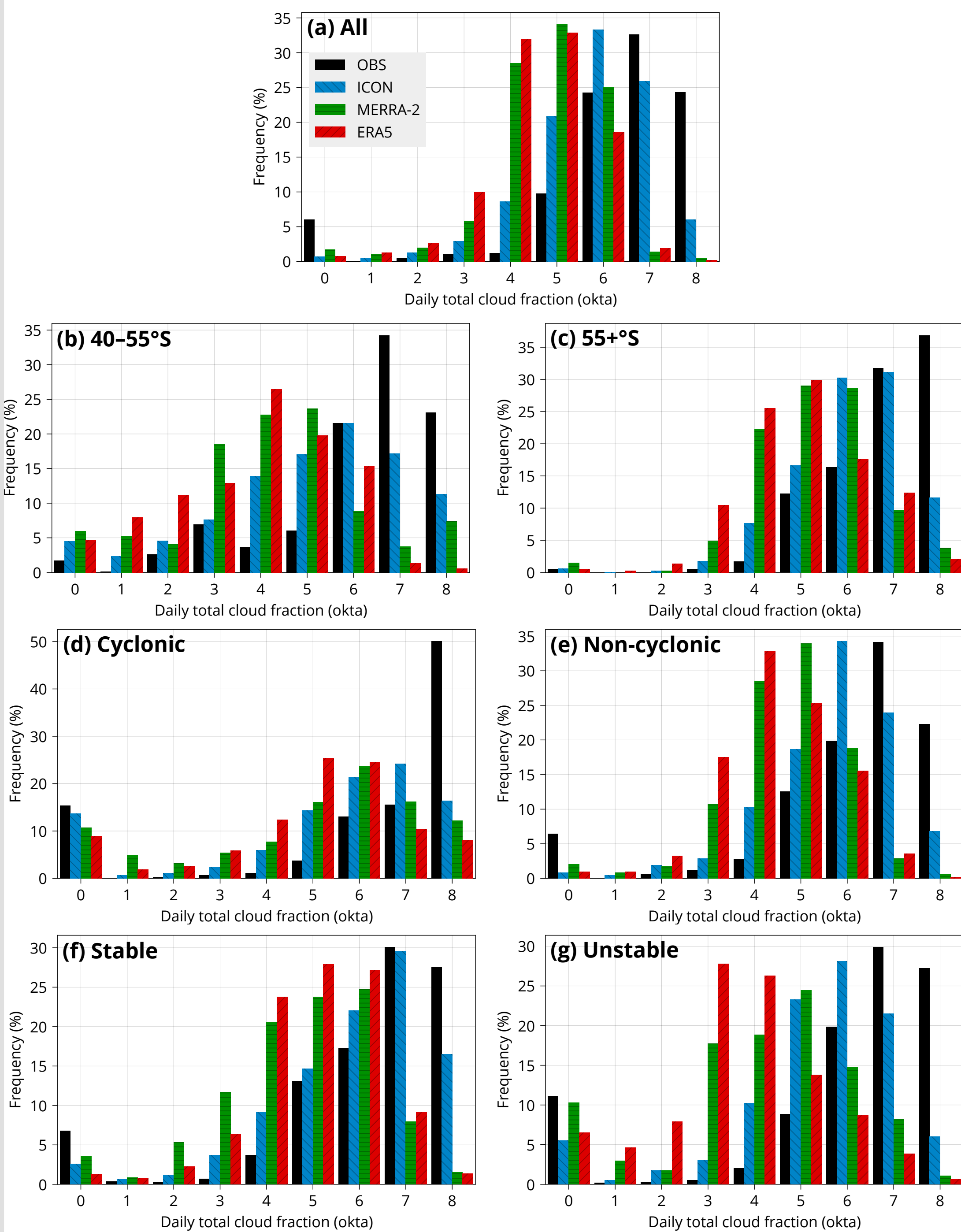
Filtering precipitation using machine learning

- Profiles with precipitation cannot be easily distinguished from clouds in observations.
- They cannot be compared with the models, which do not provide precipitation mixing ratios.
- Instruments such as a rain gauge are not reliable on ships.
- We train a convolutional artificial neural network (ANN) to recognise precipitation in lidar backscatter.
- Human-performed observations are used as a training reference.
- The ANN achieves 65% sensitivity and 87% specificity when the true positive rate (26%) is made to match observations.



Daily total cloud fraction

- Calculated from the lidar cloud mask as the daily total cloud fraction, irrespective of height.
- Observations have the greatest representation of high cloud cover (5–8 oktas), peaking at 7 oktas.
- ICON tends to be 1 okta clearer than the observations, peaking at 6 oktas, and highly underestimating days with 8 oktas.
- The reanalyses underestimate cloud cover by about 2 oktas and strongly underestimate days with 7 and 8 oktas.
- The cyclonic subset has the highest cloud cover, with 8 oktas occurring half the days.
- This is not represented by ICON or the reanalyses at all.
- High-latitude SO tends to have greater cloud cover, peaking at 8 oktas.
- The largest biases are present in ERA5 in the unstable subset, in which ERA5 peaks at 3 oktas, whereas the observations peak at 7 oktas and show negligible cloud cover below 5 oktas.



Acknowledgements. PK and FB, and the nextGEMS project received funding from the European Union's Horizon 2020 research and innovation program under a grant agreement no. 101003470. FB received funding from the Wenner-Gren Foundation and the Swedish e-Science Research Centre. The work of GM was supported by the United States (U.S.) Department of Energy Award DE-SC0021159. Supercomputing resources were provided by the DKRZ (project 1125 ICON-development) and the National Academic Infrastructure for Supercomputing in Sweden (allocation 2023/22-202). The data collection by the University of Canterbury was funded by the Deep South National Science Challenge Clouds and Aerosols project. Data collection on the AA15-16 voyages was funded by the Australian Antarctic Science project (grant no. 4292). We acknowledge the contribution of Thorsten Mauritsen to funding acquisition and project management. We acknowledge the RV *Polarstern* datasets provided by the Alfred Wegener Institute and Pangaea, the AA15-16 dataset provided by the Australian Antarctic Division (AAD) and University of Canterbury (UC), the RV *Tangaroa* datasets provided by the National Institute of Water and Atmospheric Research and UC, the NBP1704 dataset provided by the National Science Foundation, Cooperative Institute for Research in Environmental Sciences, University of Colorado and UC, the HMNZS16 dataset provided by the Royal New Zealand Navy and UC, the MARCUS dataset provided by ARM, the Australian Bureau of Meteorology, and AAD. Technical, logistical, and ship support for MARCUS and MICRE were provided by the AAD through Australian Antarctic Science projects 4252 and 4387, and we thank Steven Whiteside, Lloyd Symonds, Rick van den Erden, Peter de Vries, Chris Young, Chris Richards, Andrew Kleckciuk, John French, Terry Egan, Nick Cartwright, and Ken Barrett for all of their assistance. We thank the scientific staff, the crew, and everyone involved in collecting data on the voyages and stations, especially Gert König-Langlo, Holger Schmitthusen, Roger Marchand, Peter Guest, Kelly Schick, Jamie Halla, and Mike J. Harvey (†). We thank Loretta Preis for providing additional RV *Polarstern* data. We acknowledge the ICON model output provided by the nextGEMS project, Deutscher Wetterdienst, Max-Planck-Institute for Meteorology, DKRZ, Karlsruhe Institute of Technology, and Center for Climate Systems Modeling; reanalysis dataset ERA5 provided by the Copernicus Climate Change Service; MERRA-2 provided by the Global Modeling and Assimilation Office; CERES datasets provided by the NASA Langley Atmospheric Science Data Center Distributed Active Archive Center; and the Natural Earth dataset provided by naturalearthdata.com. **This poster is licensed under the Creative Commons Attribution 4.0 International license (<http://creativecommons.org/licenses/by/4.0/>).**